

KINSHOFER

KINSHOFER

SMART CHOICE

KINSHOFER



DRS-SERIES SCRAP SHEARS

KINSHOFER SMART CHOICE.

Meet the most important demands of the clients. The **KINSHOFER DRS Mobile Shear** with its 360° rotation was engineered to deliver a scrap shear with a maximum force, highest speed and optimal weight to performance ratio in daily use in scrap yards and demolition sites. This robust tool can be used for a wide variety of jobs including demolition, scrap processing and tire recycling. With three different mounting options, the DRS line is available in six different sizes, suitable for excavators from 14t to 100t operating weight.

- ☑ Extremely high cutting force and optimal performance to weight ratio.
- ☑ Powerful cylinder with speed valve – fully protected in the shear body.
- ☑ More cutting force due to offset APEX of shear blades.
- ☑ Body made of wear resistant, fine grained steel.
- ☑ Heavy duty bearings in the pivot points for a long lifetime.
- ☑ Unique, extremely robust Shear Arm Guiding System (SGS).
- ☑ Robust mouth design with large opening for scrap and concrete.
- ☑ Exchangeable and re-weldable piercing tip.
- ☑ All blades are 3 or 7 times indexable.
- ☑ Unique Blade Locking System (BLS) in upper and lower jaw.
- ☑ Heavy duty 360° rotation with oversized slewing ring.
(shear also available without rotation).
- ☑ Optional: Different airbrush designs.





Shear Arm

- ☑ **Massive shear arm** made of Hardox steel for a long lifetime
- ☑ **Heavy duty slim shear arm design** guarantees an optimum penetration

Bearings

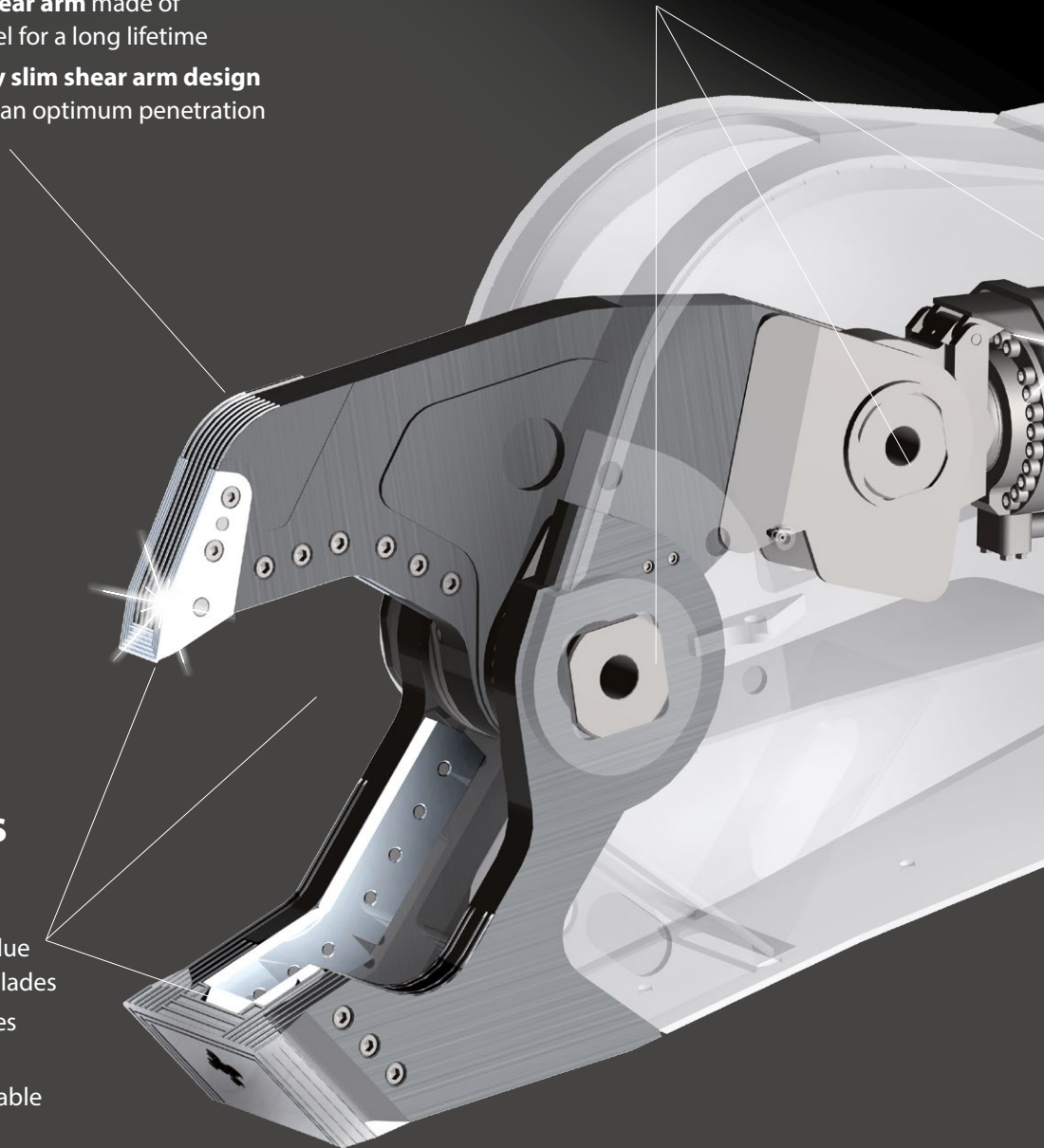
- ☑ **Generously dimensioned and free of play adjustable shear arm and cylinder bearing** minimize the wear of pins and bearings and jaw distortion
- ☑ **Induction-hardened pins** are seated in **steel bearings**
- ☑ **Hardened lateral guide plates** provide a stable support of the shear arm within the main bearing for a longer lifetime (Shear Arm Guide System SGS)

Mouth Design Cutting Blades

- ☑ **Optimal mouth design** with large opening
- ☑ **More cutting capacity** due to offset APEX of shear blades
- ☑ **Four-way indexing blades** provide longer life span
- ☑ **Piercing tip** is exchangeable and re-weldable
- ☑ **All blades** can be released from the outside
- ☑ **Blade Locking System (BLS)** in upper and lower jaw

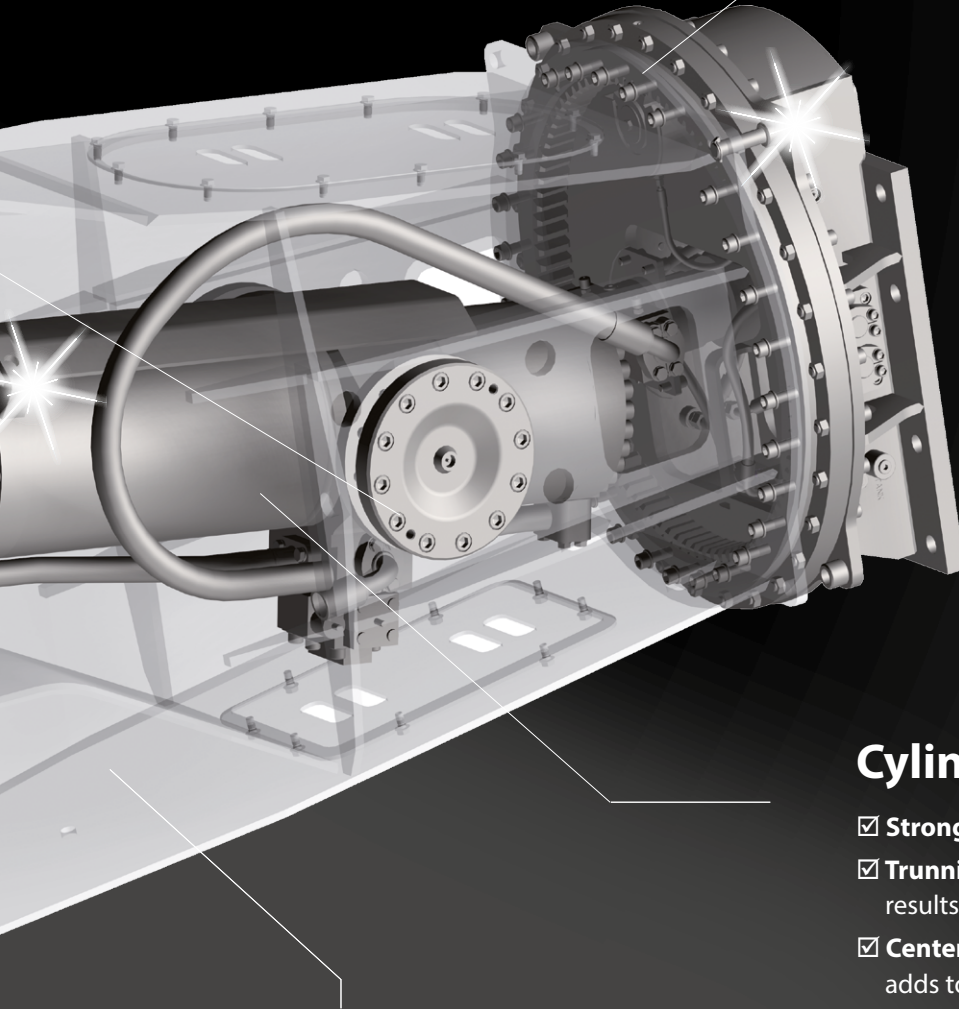
Performance to Weight Ratio

- ☑ **Endurance tests** as well as **FEM stress calculations** confirm the **weight optimized design** and provide an ideal weight / power ratio



Heavy Duty Rotation

- ☑ **360° continuous rotation**
(shear also available without rotation)
- ☑ **Oversized slewing ring** is able to bear high forces, shock loads and bending moments
- ☑ **Heavy duty motors** for a maximum rotation torque



Shear Body

- ☑ **Strong box design** made of high-strength fine grained steel. The shear body ensures highest strength
- ☑ **Fast access** to hoses and hydraulics through service openings
- ☑ **No protruding components**
Minimizes the chance of down time

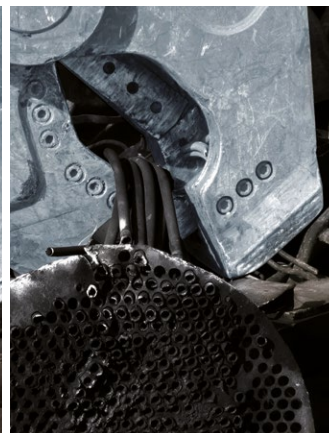
Cylinder / Hydraulics

- ☑ **Strong long-stroke cylinder** with speed valve
- ☑ **Trunnion design of the hydraulic cylinder** results in an overall shorter shear length
- ☑ **Center of gravity closer** to the machine adds to higher stability
- ☑ **Cylinder completely protected** within the body
- ☑ **High pressure hoses** withstand pressure spikes
- ☑ **High capacity swivel** helps to avoid high oil temperature and to ensure high oil flow / speed

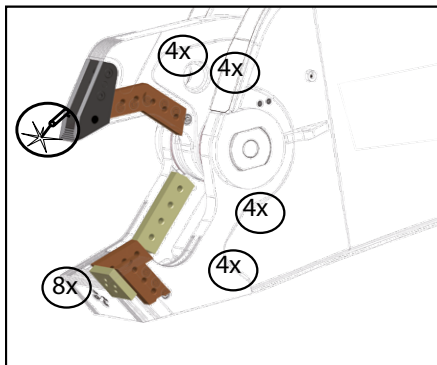
KINSHOFER Maximum Support

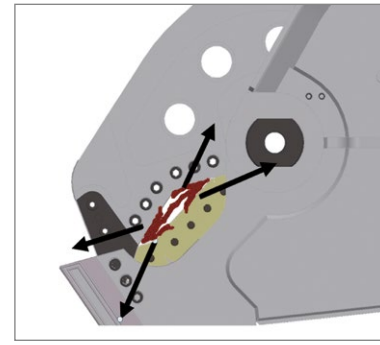
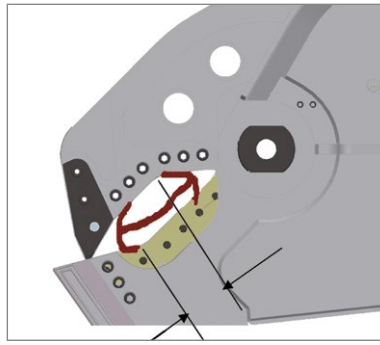
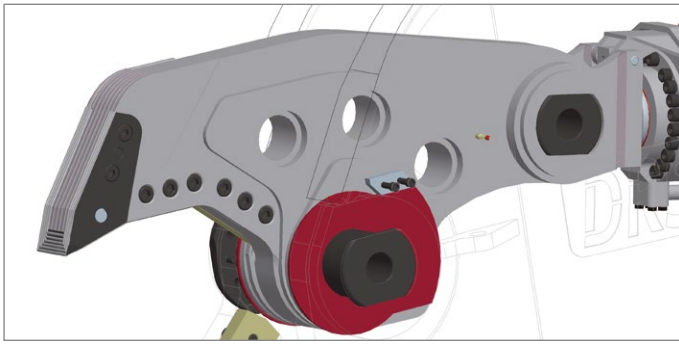
For the **KINSHOFER** range there is a comprehensive manufacturer service program for the period of the shear's service life. Based on customer demand. It is founded on quality, availability and service:

- ☑ DRS scrap shears are designed to reduce service and be maintenance friendly.
- ☑ Maximum availability of all our products – including wear parts to ensure minimal downtime and optimal performance.
- ☑ General maintenance and reconditioning by our customer service department.
- ☑ Development of individual service concepts for each user.
- ☑ Dealers world-wide are trained each year (sales training and service training) in order to have all up to date information. Our own intranet system provides a direct link between our dealers and **KINSHOFER**.



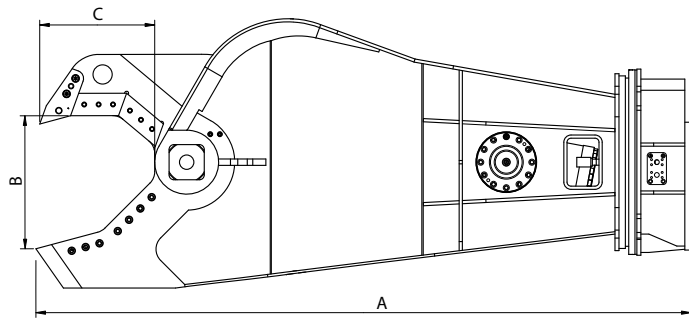
Example of lower costs of ownership:
Up to 4 or 8 times reusable cutting blades





Jaw is fully guided by hardened shims. Unique, extremely robust Shear Arm Guiding System (SGS) – easy to maintain

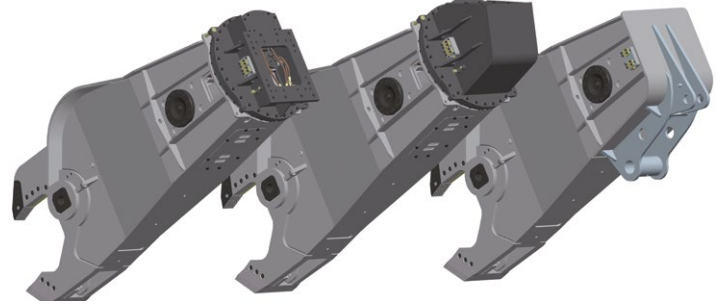
Offset APEX: Steel is compressed and molded in the mouth and thus easier to cut



DRS-A-Version:
rotating, for mount on dipper or boom with a bolt-on adapter

DRS-B-Version:
rotating, for mount on boom with a weld-on adapter

DRS-C-Version:
non-rotating, for mount on boom with a weld-on adapter



Technical Data / Dedicated Shears with 360° Rotation or rigid mount (without Rotation)

Type	Weight * (kg/lbs)	Length A * (mm/in)	Jaw opening B (mm/in)	Jaw depth C (mm/in)	Primary cutter length (mm/in)	Operating weight [at boom] (t/lbs)	Operating weight [at dipper] (t/lbs)
DRS-25-A	2150 / 4730	2740/108	500/19.7	460/18.1	180/280 / 7.1/11.0	14-20/30800-44000	20-30/44000-66000
DRS-30-A	3100 / 6820	2965/117	570/22.5	490/19.5	200/300 / 7.9/11.8	18-25/39600-55000	25-35/55000-77000
DRS-45-A	4100 / 9020	3290/130	625/24.5	540/21	225/330 / 8.9/13	25-35/55000-77000	32-50/70400-110000
DRS-60-A	5550 / 12210	3660/144	720/28.5	620/24.5	250/380 / 9.8/15	32-50/70400-110000	45-65/99000-143000
DRS-60-B	5640 / 12410	4100/161	720/28.5	620/24.5	250/380 / 9.8/15	32-50/70400-110000	-
DRS-60-C	4850 / 10670	3285/129	720/28.5	620/24.5	250/380 / 9.8/15	25-35/55000-77000	-
DRS-75-A	6950 / 15290	4075/160	835/33	720/28.5	300/440 / 11.8/17.3	40-65/88000-143000	60-80/132000-176000
DRS-75-B	7050 / 15510	4550/179	835/33	720/28.5	300/440 / 11.8/17.3	40-65/88000-143000	-
DRS-75-C	6200 / 13640	3650/144	835/33	720/28.5	300/440 / 11.8/17.3	32-50/70400-110000	-
DRS-90-A	8500 / 18700	4800/199	950/37.4	815/32.1	350/480 / 13.8/18.9	50-80/110000-176000	75-100/165000-220000
DRS-90-B	8600 / 18920	5000/197	950/37.4	815/32.1	350/480 / 13.8/18.9	50-80/110000-176000	-
DRS-90-C	7700 / 16940	4000/158	960/37.8	815/32.1	350/480 / 13.8/18.9	40-65/88000-143000	-

*excl. adapter **cutting force calculated at a distance of 120 mm / 4.7 in (DRS-25) / of 140 mm / 5.5 in (DRS-30) / of 160 mm / 6.3 in (DRS-45 to DRS-90) from centre of pin

Hydraulics

Type	Opening/ Closing		Rotation		Back pressure max.	Working cycle Opening/ Closing (sec)
	Pressure max. (bar/psi)	Flow (l/min / GPM)	Pressure max. (bar/psi)	Flow (l/min / GPM)		
DRS-25	380/5472	150-250 / 39.6-66.5	140/2016	40-60/10.6-15.9	-	3.5 / 2.5
DRS-30	380/5472	200-300 / 52.85-79.3	140/2016	40-60/10.6-15.9	-	3.5 / 2.5
DRS-45	380/5472	300-400 / 79.3-105.7	140/2016	40-60/10.6-15.9	-	3.7 / 2.2
DRS-60	380/5472	400-600 / 105.7-158.5	200/2880	60/15.9	10/144 (drain line required)	3.0 / 2.2
DRS-75	380/5472	600-800 / 158.5-211.4	200/2880	60/15.9	10/144 (drain line required)	3.0 / 2.5
DRS-90	380/5472	700-1000 / 185-264.2	200/2880	80/21.1	10/144 (drain line required)	3.5 / 2.5

Steel Appetites

Steel Profiles	DRS-25	DRS-30	DRS-45	DRS-60	DRS-75	DRS-90
H-beams***	light 10" / 15 in ²	13" / 21 in ²	16" / 26 in ²	20" / 32 in ²	24" / 35 in ²	27" / 40 in ²
	normal 8" / 12.5 in ²	10" / 18 in ²	12" / 23 in ²	14" / 28 in ²	16" / 30 in ²	18" / 32 in ²
	heavy 4" / 7 in ²	5" / 11 in ²	6" / 14 in ²	7" / 18 in ²	8" / 20 in ²	9" / 22 in ²
I-beams***	light 17" / 15 in ²	20" / 21 in ²	24" / 26 in ²	27" / 32 in ²	30" / 35 in ²	35" / 40 in ²
	normal 12.5" / 12.5 in ²	15" / 18 in ²	18" / 23 in ²	20" / 28 in ²	22" / 30 in ²	24" / 34 in ²
L-angles	8x8x.6"	10x10x.825"	10x10x1"	12x12x1"	12x12x1,125"	14x14x1,125"
solid round	3"	3.5"	4.0"	4.5"	5.0"	6.0"
solid square	2.5"	3"	3.5"	4.0"	4.75"	5.25"
piercing plate	0.6"	0.825"	1.0"	1.0"	1.2"	1.375"
pipe (Ø x wall)	10"x.365"	12"x.375"	16"x.375"	18"x.375"	22"x.375"	24"x.375"

This chart gives an indication of the cutting capacity of the DRS Shears based on the assumption of a working pressure of 350 bar, normal steel profiles with a tensile strength of maximum 52,613 lbf/in², and a good condition of the blades. The DRS Shear cuts bigger size profiles in two times as long the web thickness does not exceed the maximum thickness of the piercing plate.

***: profile size is indicated as profile height / cross section area



KINSHOFER



KINSHOFER SMART CHOICE is the logic of a strong brand. It consolidates our commitment to our products ensuring mature and ground-breaking technologies that guarantee user efficiency, stability, strength, speed and serviceability.

SMART CHOICE – highlights the commitment of the **KINSHOFER Group** to the demolition and recycling market as well as to **QUALITY** itself.

KINSHOFER is specialist for scrap yard and demolition business with more than 40 years experience in developing and manufacturing.

For the user of the DRS-Products **KINSHOFER** offers also heavy duty orange peel grapples to complement our program.



KINSHOFER
crane and excavator attachments

The Trendsetter for Demolition and Recycling Attachments

KINSHOFER GmbH
Hauptstrasse 76
DE-83666 Waakirchen
Tel.: +49 (0)8021 – 88 99 0
Fax: +49 (0)8021 – 88 99 37
info@kinshofer.com
www.kinshofer.com

DEMAREC Demolition and Recycling Equipment B.V.
Den Hoek 10
NL-5845 EL St. Anthonis
The Netherlands
Tel.: +31 (0)485 442300
Fax: +31 (0)485 442120
info@demarec.com
www.demarec.com

KINSHOFER UK Ltd.
4 Milton Industrial Court
Horsfield Way, Bredbury
Stockport, Cheshire, GB - SK6 2TA
Tel.: +44 (0)161 – 406 7046
Fax: +44 (0)161 – 406 7014
sales@kinshofer.co.uk
www.kinshofer.com

KINSHOFER North America
5040 Mainway Drive, Unit #11
Burlington, ON L7L 7G5 Canada
Tel.: +1 (905) 335 2856
Fax: +1 (905) 335 4529
Toll Free (NA): 1-800-268 9525
sales-northamerica@kinshofer.com
www.kinshofer.com

KINSHOFER France S.A.R.L.
B.P. 20100
FR-67213 Obernai Cedex
Tel.: +33(0) 3 88 39 55 00
Fax: +33(0) 3 88 79 06 75
info@kinshofer.fr
www.kinshofer.com

Darda **KINSHOFER**
Construction Machinery Co. Ltd.
Unit #306, Landmark Tower 2
8 Dongsanhuan Road
Beijing 100004
P.R. of China
Tel.: +86 (10) 6590 6422
Fax: +86 (10) 6590 6423
info@darda.com.cn
www.darda.com.cn

KINSHOFER Aponox Oy
Laajamäentie 1
FI-13430 Hämeenlinna
Tel.: +358 (0)75 7540 200
Fax: +358 (0)75 7540 210
info@kinshofer-aponox.com
www.kinshofer-aponox.com

RF System AB
Furutorpögatan 6
SE-288 34 Vinslöv
Tel.: +46 (0)44 817 07
Fax: +46 (0)44 859 63
info@rf-system.se
www.rf-system.se