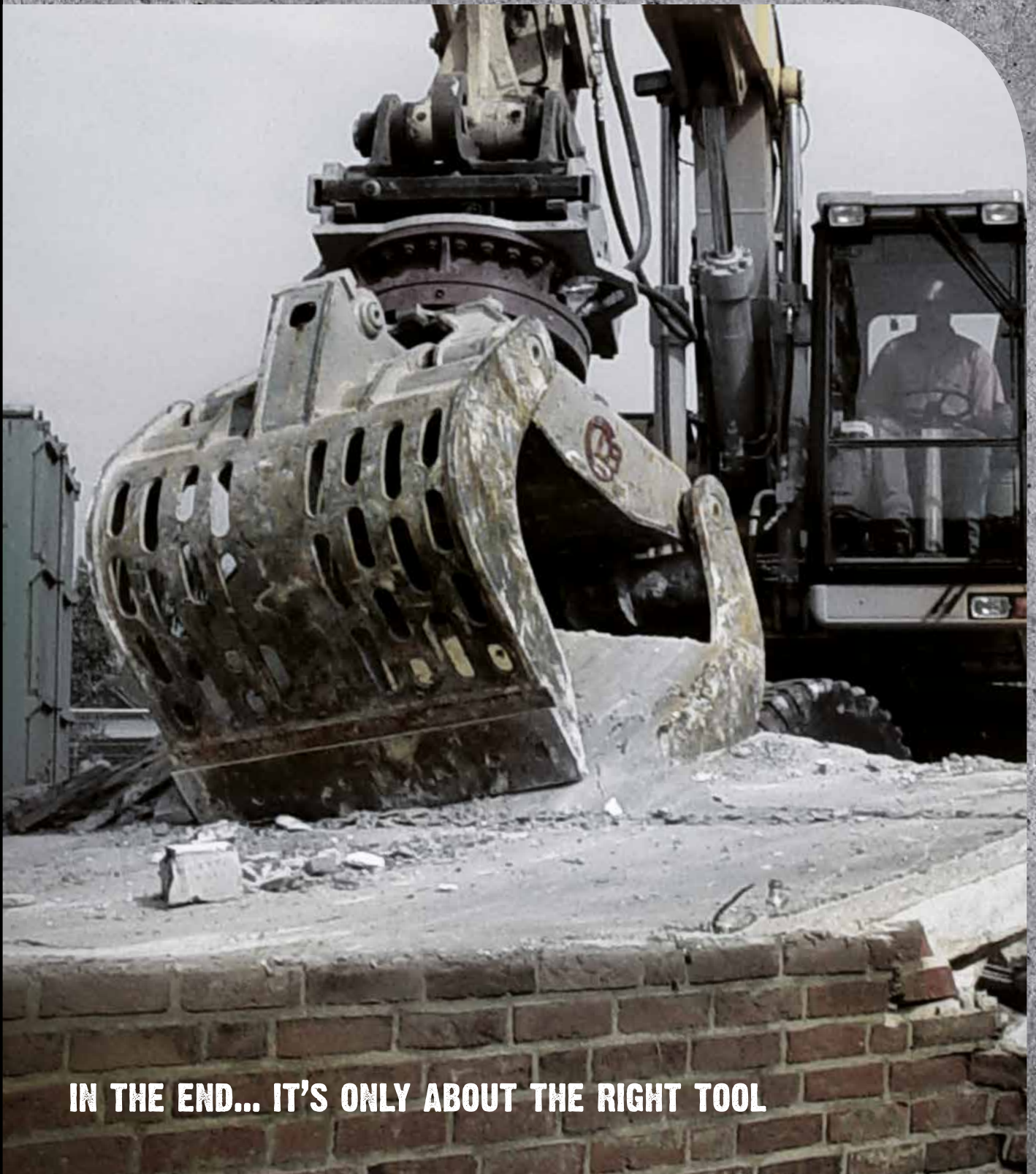




DEMAREC DEMOLITION AND SORTING GRABS

DRG-14, DRG-15, DRG-17, DRG-19, DRG-22, DRG-25, DRG-27, DRG-28, DRG-36, DRG-45, DRG-65



IN THE END... IT'S ONLY ABOUT THE RIGHT TOOL

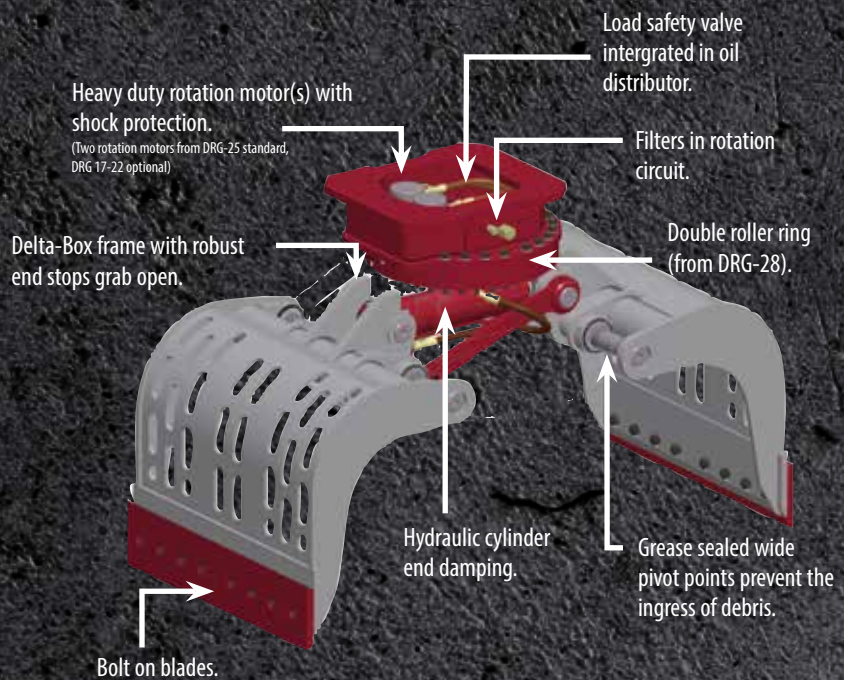
DEMAREC DEMOLITION AND SORTING GRABS



DEMAREC demolition and sorting grabs are widely applied for demolition, recycling and other applications. These grabs have already proved themselves in the demolition and recycling industries. The Delta-Box frame is designed to withstand the forces of heavy applications and therefore has a long lifetime.

Key features and benefits

- Delta-Box Frame with wide pivot points
- Robust end stops grab open
- Heavy duty rotation motor(s) with shock protection
- Double roller ring (from DRG-28)
- Heavy duty side plates from HB500
- Grease sealed pivot points prevent the ingress of debris
- Wear blades made from HB500
- Load safety valve
- Hydraulic cylinder end damping
- Bolt on mounting bracket
- Standard two rotation motors from DRG-25
- Filters in rotation circuit



Technical specifications

Type		DRG-14	DRG-15	DRG-17	DRG-19	DRG-22	DRG-25	DRG-27	DRG-28	DRG-36	DRG-45	DRG-65
Carrier weight*	ton	10 - 18	12 - 20	12 - 24	13 - 25	15 - 30	18 - 28	20 - 30	24 - 40	30 - 50	35 - 60	50 - 80
Weight (approx.)**	kg	860	900	1030	1115	1315	1400	1480	1820	2210	2330	4165
Capacity	l	340	415	365	480	570	650	760	825	960	1075	1660
Closing force	kN	43	43	50	50	62	62	62	70	80	80	140
Opening	mm	1730	1730	1757	1895	1992	2050	2050	2193	2325	2355	2700
Width	mm	750	900	850	1000	1000	1000	1200	1100	1250	1400	1500
Height	mm	1228	1228	1225	1256	1340	1380	1380	1393	1481	1496	1818
Open/Closing Pmax	bar	350	350	350	350	350	350	350	350	350	350	350
Flow	l/min	80	80	100	100	100	100	100	120	120	120	200
Rotation Pmax	bar	140	140	140	140	140	140	140	140	140	140	140
Flow	l/min	40	40	40	40	40	40 - 60	40 - 60	40 - 60	40 - 60	40 - 60	40 - 60

*Depending on lifting capacity of carrier **Weight excluding bracket

Subject to change without notice.

TRENDSETTER IN DEMOLITION AND RECYCLING EQUIPMENT



Demolition and Recycling Equipment B.V., De Hork 32 - 5431 NS Cuijk - The Netherlands ☎ +31 (0)485 442300 - info@demarec.com